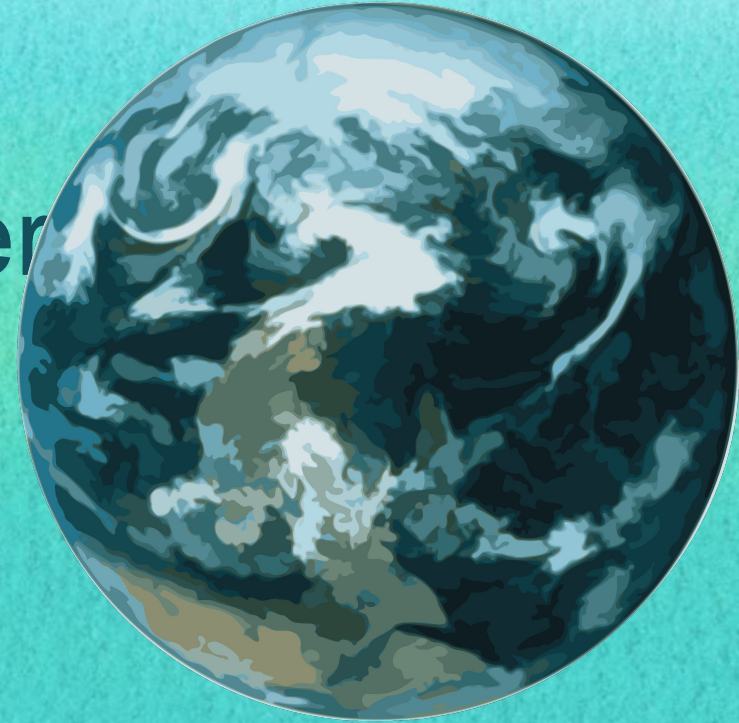


# Preventing Stormwater Pollution

Anjali Thakker  
AmeriCorps Watershed Ambassador WMA 11



# AmeriCorps Watershed Ambassador Program

## Presentations



## Environmental Stewardship Projects



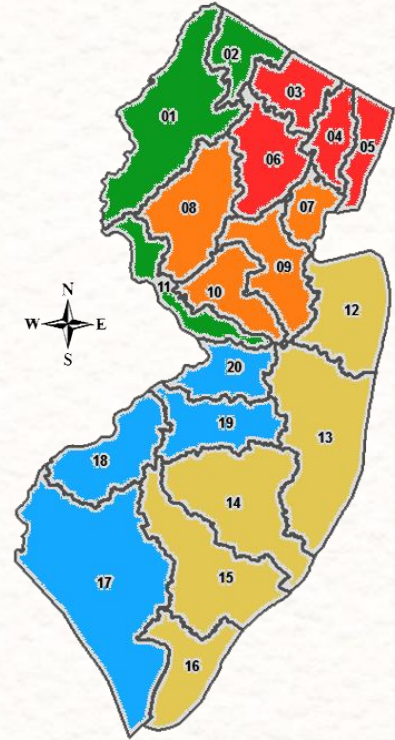
## Stream Assessments





# What is a watershed?

An area of land, based on topography, that drains into a common water body.



# What is stormwater runoff?

- Development → an increase in impervious surfaces
- Water cannot be absorbed into the ground
- Instead it carries pollutants into water bodies
- Combined sewer overflow systems → raw sewage is discharged into waterways





# How do we pollute stormwater?

Point Source: the  
source is  
identifiable



Nonpoint Source:  
the source is not  
identifiable



# What are the impacts of stormwater pollution?

- Reduces drinking water quality
  - Increases water bills
  - Reduces amount of safe/accessible water sources → less than **1%** of the world's water is safe and accessible for humans (EPA)
- Destroys animal habitat
- Destroys food sources
- Prevents recreational activities





# What are the impacts of stormwater pollution?

- Harmful Algal Blooms
  - “...a rapid increase or accumulation in the population of algae and algae-like bacteria in a waterbody” (NJDEP)
- Microplastics
  - Plastic fragments less than 5 mm in length



## Sources:

<https://www.state.nj.us/dep/wms/HABS.html#>  
<https://oceanservice.noaa.gov/facts/microplastics.html>  
<https://www.whoi.edu/oceanus/feature/junk-food/>

# How can you help?

- Minimal: changing daily behavior
- Moderate: educating yourself and others
- Maximum: getting involved in environmental stewardship



# Changing Daily Behavior

- Reduce, reuse, recycle
- Cleanup regularly
- Check your car



# Educating Yourself and Others

- Do your research
- Conduct a stormwater audit
- Have discussions with friends and family members
- Go to lectures and workshops





# Getting Involved in Environmental Stewardship

- Go to environmental commission meetings and other local meetings
- Get involved in environmental stewardship projects
- Plan your own project
  - Tree planting
  - Rain barrel workshop/installation
  - Rain garden installation
  - Cleanup
- Go to training events and participate in citizen science



# Barriers

- Brainstorm
  - What barriers prevent you from participating in the activities mentioned?
  - What help would you need to overcome those barriers?



# Resource List

- Put email on virtual sign in sheet

# Contact

WMA 11 Email: [ambassadorwma11@gmail.com](mailto:ambassadorwma11@gmail.com)

NJWAP Website: <https://www.nj.gov/dep/wms/bears/amicorps.htm>

Facebook: @NJWAP

